

## FM15~25 Series Water Flow

### Meter FM15-25 Series Water Flow Meter

#### Applications:

FM15-25 Series Rotatory Wing Dry Transmitting Water Flow Meters are used for measuring the volume of cold/hot potable water passing through the pipeline and remotely transmitting the signal of the water volume to remote monitoring equipment.

#### Features:

- Rotary-Vane Dry-Dial Type
- Iron Body
- Magnetic Drive
- Local Dials Provide Confirmation of Remote Indicators
- Maintenance Free
- Pulse Signal for Monitoring by Centralized System
- Available in 10L and 100L per pulse



#### Technical Data

Part Number	Meter Size Dia. DN (mm)	Class	Qs	Qp	Qt	Qmin
			Overload Flow	Normal Flow	Transitional Flow	Minimum Flow
M <sub>3</sub> / h						
FM-DN15	15	A	3	1.5	0.15	0.06
FM-NPT0.5	(1/2 inch)	B			0.12	0.03
FM-DN20	20	A	5	2.5	0.25	0.10
FM-NPT0.75	(3/4 inch)	B			0.20	0.05
FM-DN25	25	A	7	3.5	0.35	0.14
FM-NPT1.0	(1 inch)	B			0.28	0.07

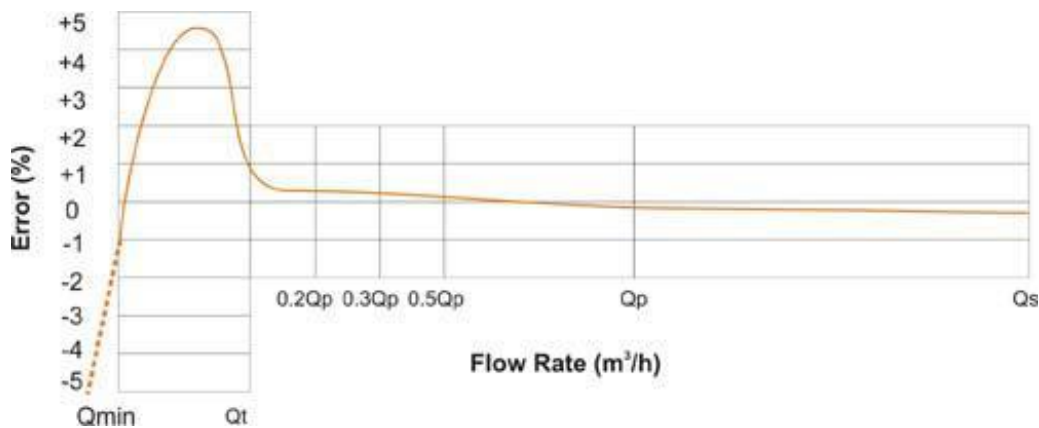
A.	Qs	Overload flow allowed without damaging the meter for approx 1 minute
B.	Qp	Normal rated maximum operating condition.
C.	Qt	The flow when the error range changes from 5% down to 2%
D.	Qmin	The minimum flow with error less than 5%

# Water Flow Meter

## Wiring Diagram

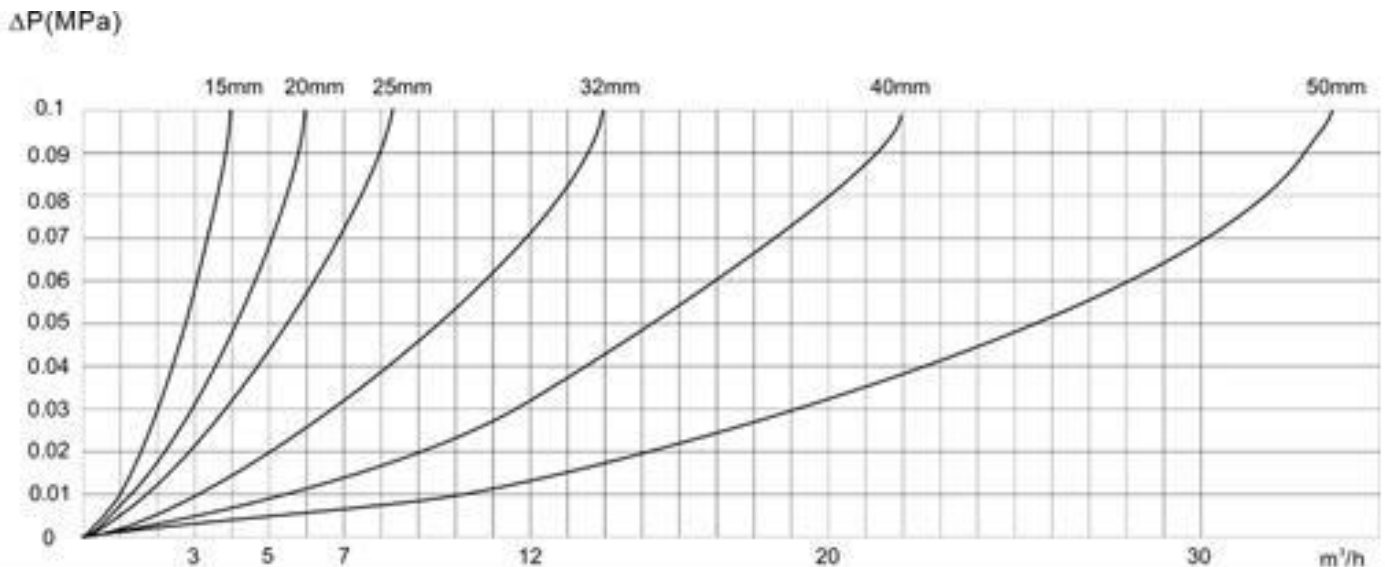
Type	Wiring	Wire Color		
Three-Wire Reed Switch		Red	white	Black
		Signal	Signal	GND

## Flow Error Curve



Error in the low flow zone from  $Q_{min}$  to  $Q_t$  is  $\pm 5\%$ .  
 Error in the upper zone from  $Q_t$  to  $Q_s$  is  $\pm 2\%$ .

## Head Loss Curve



## Signal Type

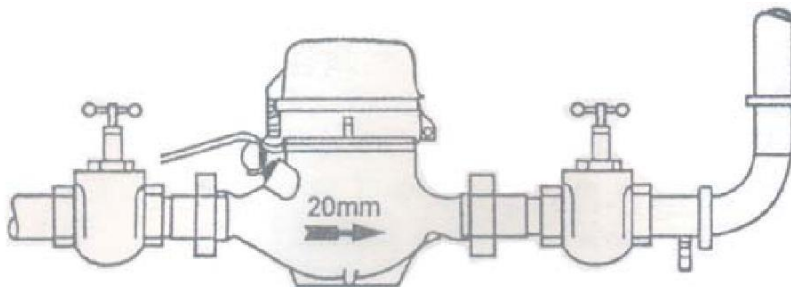
Signals are transmitted by reed switch, 10ma typical or hall effect transmitter rated at approx 5mA.

## Working Condition

- Water Temperature: 10~90°C
- Working Pressure: ≤1 MPa
- Meter should be in a dry environment, not outdoor rated.

## Installation Requirement

- Clear debris from the pipe before installation.
- Must be installed in horizontal pipe section with the head upwards and arrow pointing in the flow direction.
- Must be installed in a dry, freeze protected location and easy for removal and maintenance.
- Suggest installing in a special metering box.
- Isolation valves shall be installed before & after the water meter.



## Dimensions & Weight

Part Number	Meter Size Dia. DN (mm)	Length (L)	Width (B)	Height (H)	Connecting Thread (G)	Weight (kg)
		(mm)				
FM-DN15	15	165	99	124	G3 / 4B	1.5
FM-DN20	20	190 / 195	99	124	G1B	1.7
FM-DN25	25	225	103	132	G11 / 4B	2.4

